



Wi-Fi 7

BE24000 Quad-Band Wi-Fi 7 Router

Redefining Wi-Fi Routers



Archer BE900



24.4 Gbps 16-Stream
Quad-Band Wi-Fi 7[†]



2× 10 Gbps Ports + 4×
2.5 Gbps Ports



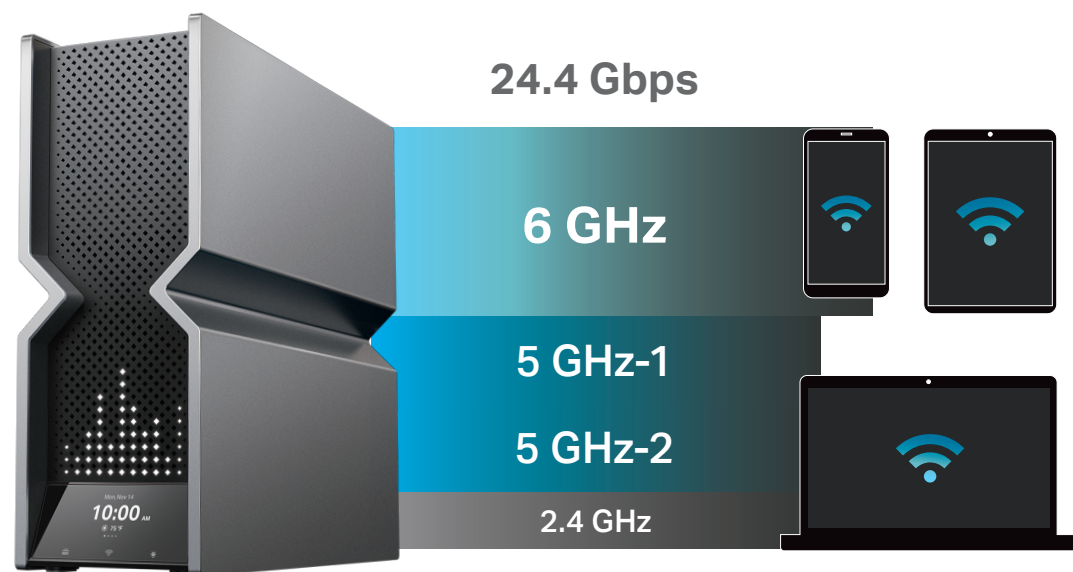
12× Layout-Optimized
Internal Antennas







Private IoT Networking for
Enhanced IoT Security

Highlights

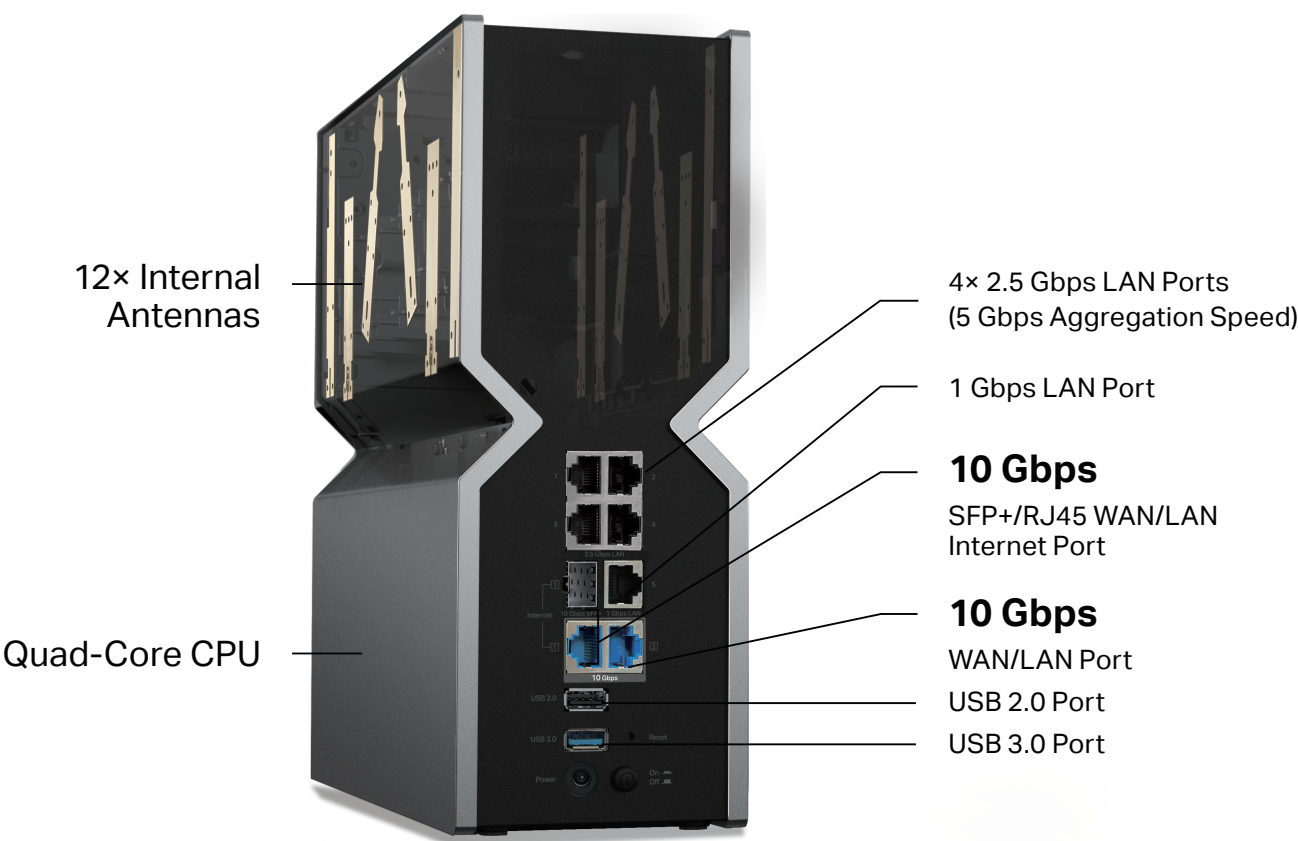
Wi-Fi 7 — Wi-Fi Like Never Before



-  **Lightning-Fast 24.4 Gbps 16-Stream Quad-Band Wi-Fi†**
Experience blazing-fast Wi-Fi speeds up to 24.4 Gbps. With a quad-band Wi-Fi 7 router, every device in your home network runs at top performance. †
-  **Unlock the Full Potential of 6 GHz Band^**
Wi-Fi 7 unleashes the full potential of the 6 GHz band with up to 320 MHz channels and 11.5 Gbps Wi-Fi speeds. Enjoy full access to 8K streaming and high-speed downloading. †^
-  **Pack 20% More Data for Higher Speeds**
4096-QAM enables Archer BE900 to deliver 20% higher theoretical transmission rates than Wi-Fi 6's 1024-QAM. Now you can play massive online games at epic speed, or live stream from your home computer. ✖
-  **Higher Capacity — Connect More Devices†**
Communicates with multiple devices via 16 streams and quad-band simultaneously. Combined with the powerful CPU, Wi-Fi 7 provides congestion-free signals to your laptop, TV, thermostat, and baby monitor.

Highlights

Archer BE900 — Redefining Wi-Fi Routers



- 2x 10 Gbps Ports for Flexible Multi-Gigabit Connections**
Equipped with two 10 Gbps WAN/LAN ports—one RJ45 port and a SFP+/RJ45 Internet port—Archer BE900 provides flexible support for both fiber and copper connections. The additional four 2.5 Gbps ports, one gigabit port, and two USB ports make it an ideal solution for future-proofing your home network. §
- Far-Reaching Coverage**
12x optimally positioned antennas, proprietary Wi-Fi optimization, and Beamforming technology deliver broader coverage, more capacity, stronger and more reliable connections, and less interference.

Highlights

TP-Link HomeShield

Manage online time and block inappropriate content to keep your family safe online with Parental Controls. Network Protection further keeps your home network safe by preventing potential threats and security issues.*



Great Compatibility

Take your Wi-Fi to the next level without worry. Archer BE900 offers great compatibility by working with all Wi-Fi generations and devices*** and all internet providers.**** It also works with Alexa and Google Assistant.



Highlights

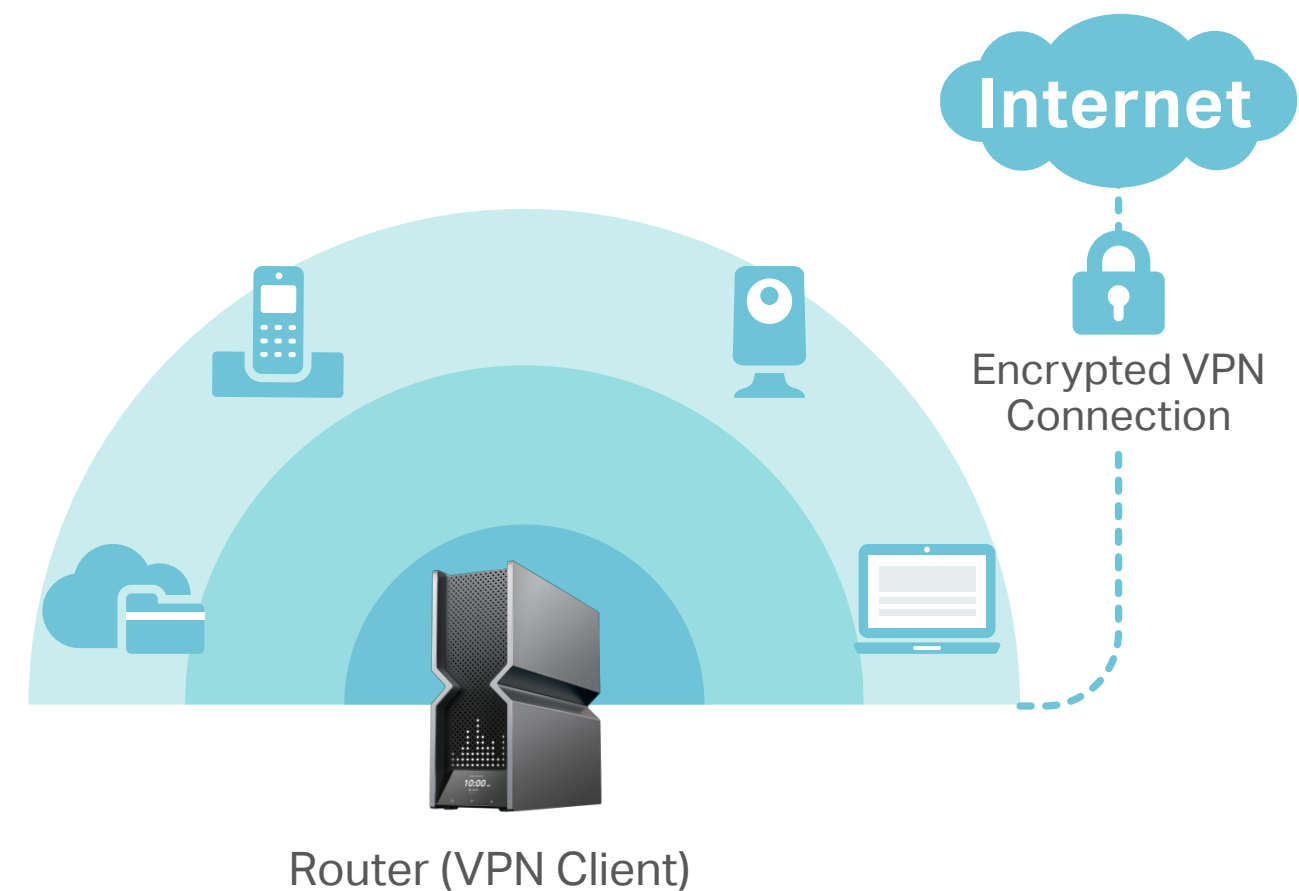
EasyMesh-Compatible

Archer BE900 is compatible with EasyMesh to form seamless whole home mesh Wi-Fi, preventing drops and lag when moving between signals. Enjoy uninterrupted streaming when moving around your home.◇



VPN Client Support

Archer BE900 allows specified devices in your home network to access remote VPN servers without needing to install VPN software on every device. Archer BE900 can also run a VPN and ordinary internet connections at the same time for added security and flexibility.



Features



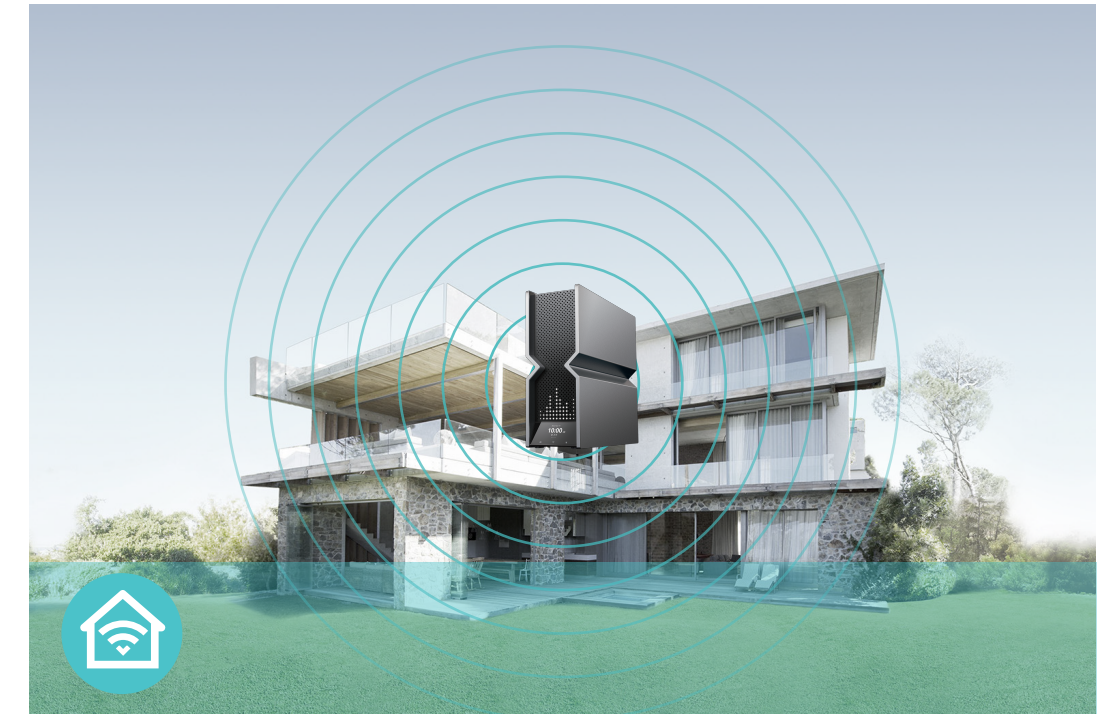
Ultra-Fast Speed

- **Lightning-Fast BE24000 Wi-Fi** – Up to 24 Gbps quad-band Wi-Fi 7 enables gaming, streaming and high-speed downloading on multiple devices—all at the same time[†]
- **10G Multi-Gig Ports** – Two 10G ports—one RJ45 port and a SFP+/RJ45 Internet port—Archer BE900 provides flexible support for both fiber and copper connections. Make full use of gigabit speeds from your local ISP.[§]
- **Greenfield 6 GHz Band** – Provides robust high-speed connections with a brand-new expansive and congestion-free band.
- **Wi-Fi 7** – Wi-Fi 7 (802.11be) features advanced technologies, including 320MHz channels and 4K QAM, drastically increasing the speed and efficiency of your entire network.[‡]
- **Smart Connect** – Intelligently assigns each device to the best Wi-Fi band for optimal performance.



High Capacity and Reliable Connections

- **Maximized Capacity** – Communicates with multiple devices via 16 streams and quad-band simultaneously. Combined with OFDMA and MU-MIMO, 16 streams won't affect your online gaming.*
- **24.4 Gbps Quad-Band Wi-Fi 7** – Enables your devices to run at full speed. Enjoy robust high-speed connections congestion-free on the wide and clear 6 GHz band.
- **Airtime Fairness** – Balances bandwidth of connected devices to improve overall throughput and efficiency.



Broad Wi-Fi Range

- **Ultimate Range Wi-Fi** – Proprietary Wi-Fi optimization, 12x high-performance antennas with optimized layout, and Beamforming deliver more capacity, stronger and more reliable connections, and less interference.
- **Beamforming Technology** – Concentrates Wi-Fi signals towards individual devices to ensure stronger connections.
- **Seamless EasyMesh network** – Transfer between seamless whole-home Wi-Fi without any drops or lag and manage your whole network using a centralized panel.

Features



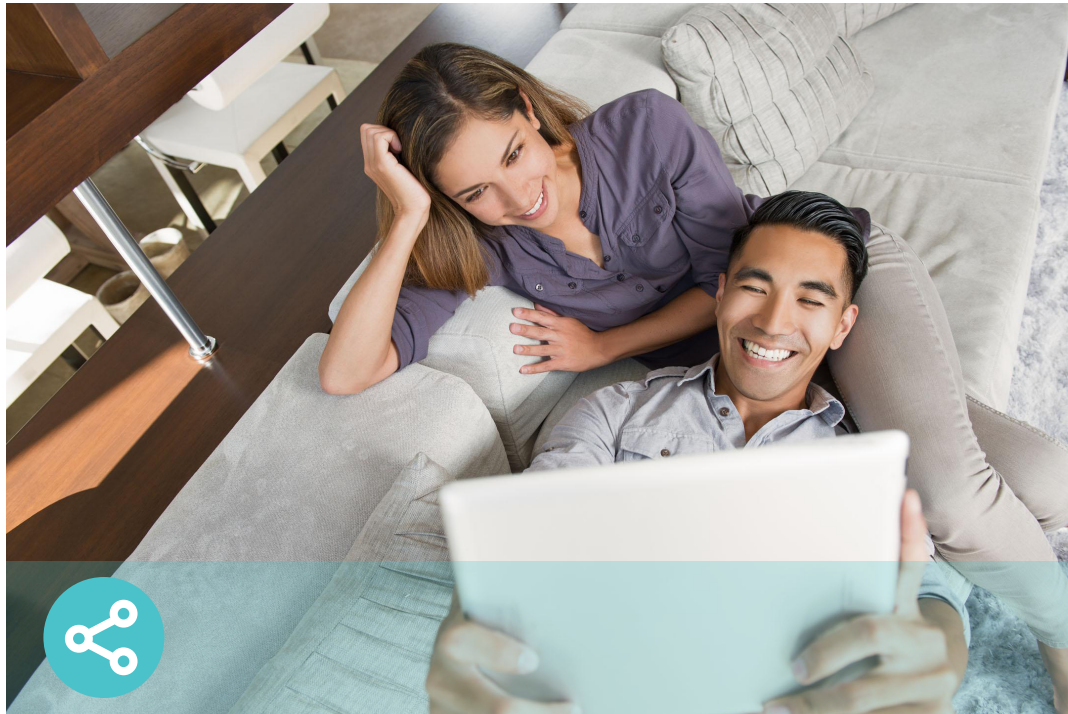
Ease of Use

- Hassle-free Management with Tether App – Network management is made easy with the TP-Link Tether app, available on any Android and iOS device.
- Intuitive Web UI – Ensures quick and simple installation without hassle.
- WPS (Wi-Fi Protected Setup) – Help you to quickly and securely connect your devices to the router’s network with a tap.
- Backwards Compatible – Take your Wi-Fi to the next level while being backwards compatible with existing 802.11 a/b/g/n/ac/ax Wi-Fi standards.
- LED Screen & Touchscreen – Easily check network status and explore more fun.
- Works with Amazon Alexa and Google Assistant – Utilize Amazon Alexa and Google Assistant to control everything via voice commands to enjoy truly intelligent life.



Robust Security

- HomeShield – TP-Link's premium security services keep your home network safe with cutting-edge features for network and IoT protection.*
- Parental Controls – Manage online time and block inappropriate content to control your family’s digital habits.
- Guest Network – Provides separate access for guests to secure the home network.
- Advanced WPA3 Encryptions – The latest WiFi security protocol, WPA3, brings new capabilities to improve cybersecurity in personal networks.**
- Access Control – Establishes a whitelist or blacklist to allow or restrict certain devices to access the internet.



Value-Added Features

- VPN Clients and Server Supported – With VPN client support, Archer BE900 allows specified devices in your home network to access remote VPN servers without needing to install VPN software on every device.
- USB 2.0/3.0 Port – Connects external storage devices to rapidly share files, photos, and videos.
- Built-in Media Server – Allows you to play music, watch videos and view photos from any device on your network.
- More Values – Advanced functions like IPTV, IPv6 compatibility, and Access Point mode bring more values.

Specifications

Wireless

- Standards: IEEE 802.11be/ax 6 GHz, IEEE 802.11be/ax/ac/n/a 5 GHz, IEEE 802.11be/ax/n/b/g 2.4 GHz
- WiFi Speeds: 11528 Mbps (6 GHz) + 5764 Mbps (5 GHz-1) + 5764 Mbps (5 GHz-2) + 1376 Mbps (2.4 GHz)[†]
- WiFi Range: 12× High-Performance Antennas with Optimized Layout
- WiFi Capacity: Quad-Band, 4×4 MU-MIMO, OFDMA, Airtime Fairness, DFS, 16 Streams
- Working Modes: Router Mode, Access Point Mode

Hardware

- Ethernet Ports: 1× 10 Gbps WAN/LAN Port + 1× 10 Gbps SFP+/RJ45 WAN/LAN Internet Port + 4× 2.5 Gbps LAN Ports + 1× 1 Gbps LAN Port[§]
- USB Support: 1× USB 3.0 Port, 1× USB 2.0 Port
- Buttons: Power On/Off Button, Reset Button, Wi-Fi On/Off Button (Touchscreen), LED On/Off Button (Touchscreen), WPS Button (Touchscreen)
- Screen Display: LED Screen, Touchscreen

Security

- WiFi Encryption: WPA, WPA2, WPA3, WPA/WPA2-Enterprise (802.1x)
- Network Security: SPI Firewall, Access Control, IP & MAC Binding, Application Layer Gateway, HomeShield Security
- Guest Network: 6 GHz Guest Network, 5GHz-1 Guest Network, 5GHz-2 Guest Network, 2.4 GHz Guest Network
- VPN Server: OpenVPN, PPTP, L2TP VPN Server, Wireguard VPN
- VPN Client: OpenVPN, PPTP, L2TP VPN Client, Wireguard VPN

Software

- Protocols: IPv4, IPv6
- Service Kits: HomeShield
- EasyMesh: Supported
- Parental Controls: HomeShield Parental Controls
- WAN Types: Dynamic IP, Static IP, PPPoE, PPTP, L2TP
- Quality of Service: QoS by Device
- Cloud Service: Auto Firmware Upgrade, TP-Link ID, DDNS
- NAT Forwarding: Port Forwarding, Port Triggering, DMZ, UPnP
- DDNS: TP-Link, NO-IP, DynDNS

Specifications

Physical

- Dimensions (W×D×H): 3.8×11.9×10.3in (96×302×262.5mm)
- Package Contents:
 - Wi-Fi Router Archer BE900
 - Power Adapter
 - RJ45 Ethernet Cable
 - Quick Installation Guide

Other

- System Requirements:
 - Internet Explorer, Firefox, Chrome, Safari, or other JavaScript-enabled browser
 - *You are recommended to use the latest version
 - Cable or DSL Modem (if needed)
 - Subscription with an internet service provider (for internet access)
- Certifications: FCC, CE RoHS
- Environment:
 - Operating Temperature: 0℃~40℃ (32℉ ~104℉)
 - Operating Humidity: 10%~90% non-condensing



For more information, please visit https://www.tp-link.com/products/details/?model=Archer+BE900_V2 or scan the QR code left

Test Data

- WiFi Transmission Power:
 - FCC: ≤ 30 dBm (2.4 GHz), ≤ 30 dBm (5 GHz), ≤ 25 dBm (6 GHz)
 - CE: ≤ 23 dBm EIRP (5.17 GHz-5.35 GHz), ≤ 30 dBm EIRP (5.47 GHz-5.725 GHz); ≤ 20 dBm EIRP (2.4 GHz); ≤ 23 dBm EIRP (6 GHz)
- WiFi Reception Sensitivity:
 - 2.4 GHz:
 - 11ax HE20 MCS0:-98dBm, 11ax HE20 MCS11:-68dBm
 - 11ax HE40 MCS0:-95dBm, 11ax HE40 MCS11:-65dBm
 - 11be EHT20 MCS13:-60dBm,11be EHT40 MCS13:-58dBm
 - 5 GHz-1:
 - 11ax HE20 MCS0:-95dBm, 11ax HE20 MCS11:-65dBm
 - 11ax HE40 MCS0:-93dBm, 11ax HE40 MCS11:-62dBm
 - 11ax HE80 MCS0:-90dBm, 11ax HE80 MCS11:-59dBm
 - 11ax HE160 MCS0:-86dBm, 11ax HE160 MCS11:-56dBm
 - 11be EHT20 MCS13:-58dBm,11be EHT40 MCS13:-56dBm
 - 11be EHT80 MCS13:-53dBm,11be EHT160 MCS13:-50dBm
 - 5 GHz-2:
 - 11ax HE20 MCS0:-96dBm, 11ax HE20 MCS11:-66dBm
 - 11ax HE40 MCS0:-94dBm, 11ax HE40 MCS11:-63dBm
 - 11ax HE80 MCS0:-91dBm, 11ax HE80 MCS11:-60dBm
 - 11ax HE160 MCS0:-87dBm, 11ax HE160 MCS11:-57dBm
 - 11be EHT20 MCS13:-59dBm,11be EHT40 MCS13:-57dBm
 - 11be EHT80 MCS13:-54dBm,11be EHT160 MCS13:-51dBm
 - 6 GHz:
 - 11ax HE20 MCS0:-95dBm, 11ax HE20 MCS11:-65dBm
 - 11ax HE40 MCS0:-93dBm, 11ax HE40 MCS11:-63dBm
 - 11ax HE80 MCS0:-90dBm, 11ax HE80 MCS11:-59dBm
 - 11ax HE160 MCS0:-87dBm, 11ax HE160 MCS11:-56dBm
 - 11be EHT20 MCS13:-58dBm,11be EHT40 MCS13:-56dBm
 - 11be EHT80 MCS13:-53dBm,11be EHT160 MCS13:-50dBm
 - 11be EHT320 MCS0:-84dBm,11be EHT320 MCS13:-47dBm

¹Maximum wireless signal rates are the physical rates derived from IEEE Standard 802.11 specifications. Actual wireless data throughput, wireless coverage, and connected devices are not guaranteed and will vary as a result of network conditions, client limitations, and environmental factors, including building materials, obstacles, volume and density of traffic, and client location.

¹Use of Wi-Fi 7 (802.11be), Wi-Fi 6 (802.11ax), and features including 320 MHz Bandwidth, 4K-QAM, OFDMA, and MU-MIMO requires clients to also support the corresponding features.

²The 320 MHz bandwidth is only available on the 6 GHz band. Simultaneously, the 320 MHz bandwidth on the 6 GHz band and 160 MHz bandwidth on the 5 GHz band may be unavailable in some regions/countries due to regulatory restrictions. Double channel width and speed refer to 320 MHz compared to 160 MHz for Wi-Fi 6 routers.

³10 Gbps internet speeds require compatible service plans and equipment. The two 10 Gbps ports cannot be concurrently configured as WAN ports.

⁴20% higher transmission rates refers to the theoretical transmission rates of Wi-Fi 7 clients when connected to Archer BE900 compared with a Wi-Fi 6 or Wi-Fi 6E router. 4096-QAM enables each symbol to carry 12 bits rather than 10 bits, which means 20% higher theoretical transmission rates than Wi-Fi 6's 1024-QAM.

*HomeShield includes the Free Basic Plan. Fees apply for the Pro Plan. Visit [tp-link.com/homeshield](https://www.tp-link.com/homeshield) for more information

**Use of WPA3 requires clients to also support the corresponding feature.

***Wi-Fi generations represent the wireless standard IEEE 802.11 a/b/g/n/ac/ax/be. All devices need to support 802.11 Wi-Fi protocols.

****A separate modem or gateway may be required. PPPoE, Static IP, and Dynamic IP are supported. PPTP and L2TP may also be supported under certain configurations.

◇TP-Link EasyMesh-compatible products can network with other devices that use EasyMesh. Failed connections may be due to firmware conflicts of different vendors. The EasyMesh-compatible function is still being developed on some models and will be supported in subsequent software updates.

Actual network speed may be limited by the rate of the product's Ethernet WAN or LAN port, the rate supported by the network cable, Internet service provider factors and other environmental conditions.

This router may not support all the mandatory features as ratified in the IEEE 802.11be specification.

Further software upgrades for feature availability may be required.